



*The TV Shield: Sizes 36" and Up*

## **Owner's Manual**

*Frequently Asked Questions*

*Assembly Instructions*

*Warranty Information*

### **Manufacturer: Protective Enclosures Company**

277 Douglas Avenue, Suite 1012

Altamonte Springs, Fl. 32714

1-800-331-2628

info@protectiveenclosures.com

[www.thetvshield.com](http://www.thetvshield.com)

*Save this assembly manual for future reference in the event that you need to order replacement parts.*



## FREQUENTLY ASKED QUESTIONS

### WHAT KIND OF MATERIALS ARE THE TV SHIELDS MADE OUT OF?

We researched and tested scores of materials (metals, coated wood/synthetic wood products, fiberglass, and many plastics) until we found the perfect solution. The TV Shield® outdoor weatherproof and water-resistant TV enclosure is crafted from premium, flexible materials because of their strong, water-resistant, scratch-resistant, and UV-resistant properties. The housing of The TV Shield® is made from HMWPE or High Molecular Weight Polyethylene. The front panel is made from industry leading ultra-clear Lexan® polycarbonate.

### HOW ARE YOUR TV COVERS MADE?

The TV Shield® outdoor LCD TV enclosure (outdoor Plasma TV cover) is handcrafted in the U.S.A. in award winning manufacturing and assembly facilities. All materials are water and UV-resistant so they will protect your TV from the elements.

### IS THERE A BEST PRACTICE FOR PLACEMENT OF THE TV SHIELD?

Yes, please see [“BEST OUTDOOR PRACTICES”](#) after Step 13 of these instructions.

### HOW DO I CLEAN MY TV COVER?

Your outdoor TV cover will look its best when kept clean. The back housing can be cleaned with a mild soap and water. However, the front panel is a special material, which will look best if you use one of our APPROVED CLEANING PRODUCTS listed in your owner’s manual in the [“CLEANING INSTRUCTIONS”](#) section.

### WILL THE OUTDOOR TV COVER WORK WITH DIFFERENT KINDS OF WALL MOUNTS?

Yes, The TV Shield® is engineered to be “universal,” and is able to be used with all “standard” VESA mounting systems, with a minimum 400x400 VESA pattern. The TV Shield is manufactured with a pre-measured and drilled hole pattern set at 400x400mm. This not only lets our patented TV Shield be “universal”, but also allows for the minimum number of holes or moisture entry points.

### DO I NEED TO MEASURE MY TV?

Yes, measuring is VERY important, especially if you plan to use a larger TV than our advertised primary sizes. Measure the dimensions of your TV and compare with the inside dimensions of the enclosure to make sure it fits before you install it. The TV Shield® is manufactured to fit:

#### **DIMENSIONS 36-43" -**

MOST 36" TO 43" TVS

MAX INTERIOR DIMENSIONS: 38.75"W x 23.5"H x 4.31"D

EXTERIOR DIMENSIONS: 42.25"W x 27.125"H x 7"D

WEIGHT: 24 LBS

#### **DIMENSIONS 52-55" -**

FITS MOST 52" TO 55" TVS

MAX INTERIOR DIMENSIONS: 50.80"W x 31.35"H x 4.1"D

EXTERIOR DIMENSIONS: 55.40"W x 35.00"H x 6.9"D

WEIGHT: 50 LBS

#### **DIMENSIONS 44-50" -**

FITS MOST 44" TO 50" TVS

MAX INTERIOR DIMENSIONS: 44.80"W x 27.5"H x 4.10"D

EXTERIOR DIMENSIONS: 49.5"W x 31.35"H x 6.8"D

WEIGHT: 34 LBS

#### **DIMENSIONS 60-65" -**

FITS MOST 60" TO 65" TVS

MAX INTERIOR DIMENSIONS: 59.75"W x 36.35"H x 4.1"D

EXTERIOR DIMENSIONS: 64.40"W x 41.10"H x 6.9"D

WEIGHT: 64 LBS

### **Helpful Tips:**

Please be aware that due to the size and weight of the front panel there will be some bowing when it is open. This is okay and will not damage the unit. There may also be some bend in the back-housing and this is also acceptable.

Please be advised that the seal around the back-housing will settle over time and you may need to apply force to close and lock the unit for 2 to 4 weeks (depending on the climate). After mounting the enclosure, it may be necessary when opening and closing the unit to continue to align the threaded screws into the front panel until the unit completely settles. This “alignment” system is integral to the structural rigidity and water-tight sealing of The TV Shield®.

Use only the approved cleaning products (sold on our website) to clean the enclosure. Regular household products may cause streaking and reduction in optical clarity.

When opening the front panel, the black threaded caps can be stored in the small black drawstring bag that is provided with the enclosure.



## **INSTALLATION INSTRUCTION TIPS - PLEASE READ:**

Thank you for purchasing The TV Shield®. Please read the following before starting the installation process.

With ample interior space behind your TV after installation, you can house most media players, cable boxes, amplifiers or any other A/V equipment desired within The Display Shield enclosure. This not only opens up other outdoor A/V opportunities but it provides that equipment the same unmatched protection as your TV.

The TV Shield® is designed to be used in conjunction with a TV wall mount, ceiling mount or any other mount using a 400x400 VESA standardized mounting pattern. Exterior mount sold separately. Upon successful installation, The TV Shield should be “sandwiched” between the back of the provided internal mount and the separately-sold external mount.

Make Sure the supporting surface will safely support the combined load of the equipment and all attached hardware and components.

Tighten screws firmly, but do not over tighten.

Over tightening can damage the items, greatly reducing their holding power.

You will need to unscrew the 6 black threaded caps from the front panel to open The TV Shield®.

**NOTE: THE 50-60" MODEL INCLUDES 10 BLACK THREADED CAPS.**

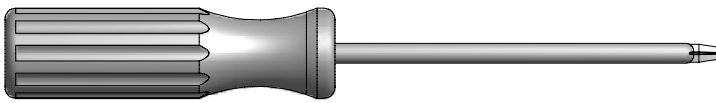
## **BEST OUTDOOR MOUNTING PRACTICES**

If you are mounting your unit in an outdoor environment, we have come up with some best practices to reduce the glare and to give you the best viewing of your TV or monitor.

- Purchasing an enclosure with anti-glare or installing our anti-glare front panel will reduce the glare to an extent, but does not eliminate it.
- Mount The TV Shield® in an area that does not get direct sun if possible.
- If mounting in direct sun or in an area that gets a lot of sun, it is best if you have some type of backdrop in front of The TV Shield®. E.g. if you can mount the enclosure where there is a wall in front of it, trees, bushes or any other darker objects, it will help with reflection.
- Use a tilting and swiveling mount as you may be able to angle the enclosure in different directions to reduce the amount of glare or reflection while watching.
- Depending on your TV's options, change the picture mode (in the settings menu) to dynamic and/or adjust the contrast, brightness, sharpness and color.

## **TOOLS REQUIRED FOR INSTALLATION**

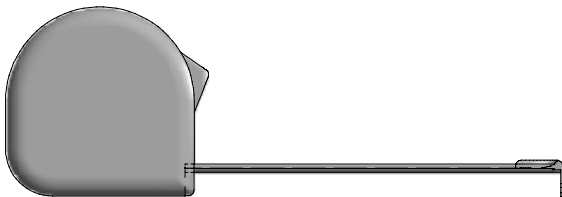
*These are the tools that are generally required for assembly of our products. These tools are not included with the product purchase, nor included in the box. You will need to use the hardware from a separately sold TV wall or ceiling mount.*



***Phillips Screw Driver***



***Flashlight***



***Tape Measure***



***Utility Knife***



***10 mm Wrench or Socket***



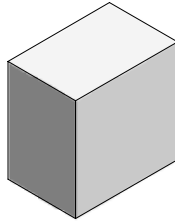
***An Adult w/ an Adult Helper***

## **PARTS IDENTIFICATION**

### ***Included in Box***



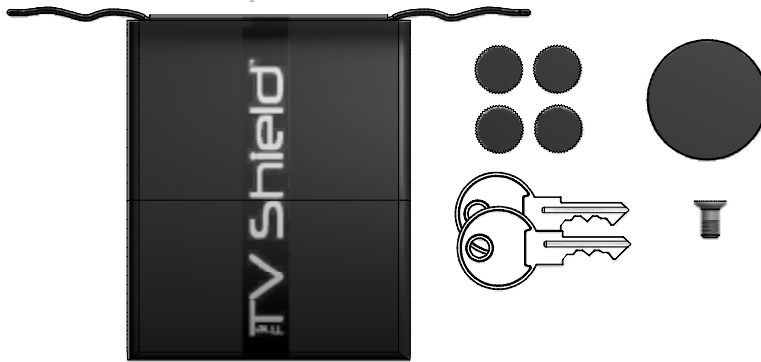
***(1) The TV Shield®***



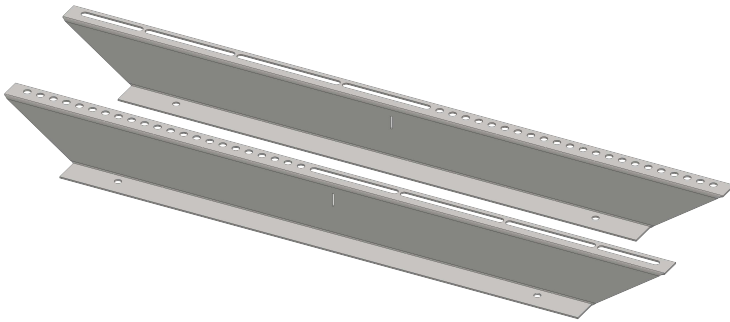
***(4) Foam Blocks for Mounting***



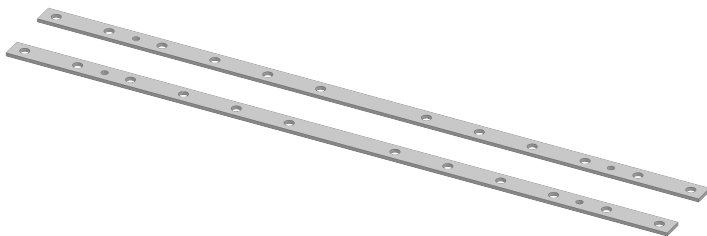
***(2) Prop Arms***



***(1) Small black drawstring bag (Keep for caps when removed) with:  
(4) Extra Knurled Caps, (4) Keys, (1) 1<sup>1/4</sup>" Round Black Handle, (1) 1/2" Screw (used to install handle)***

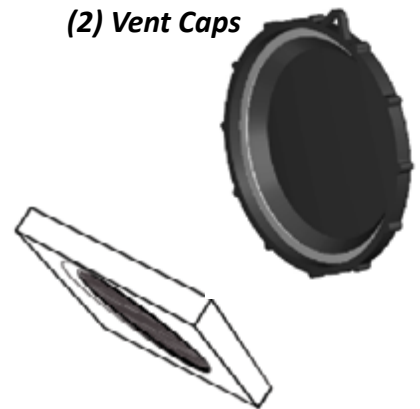


***(2) Vertical Brackets***



***(2) Horizontal Brackets***

***(2) Vent Caps***



***Fan Filter and Cover***  
***(Only included if the unit was purchased with a fan)***

# **Parts Identification (Continued)**

*Included in Box*



(4)M4x12 Screw



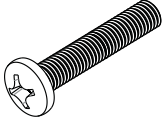
(4)M5x12 Screw



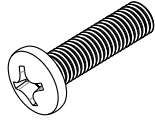
(4)M6x12 Screw



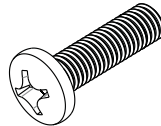
(4)M8x12 Screw



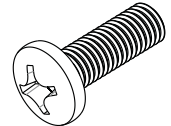
(4)M4x25 Screw



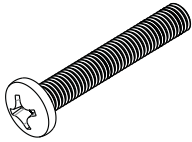
(4)M5x25 Screw



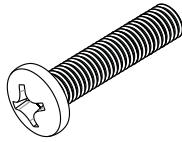
(4)M6x25 Screw



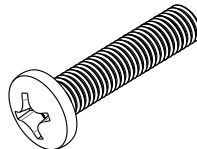
(4)M8x25 Screw



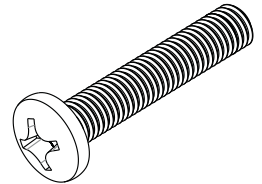
(4)M4x35 Screw



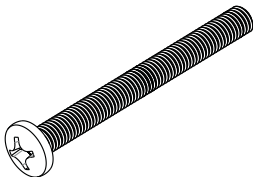
(4)M5x35 Screw



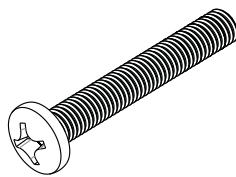
(4)M6x35 Screw



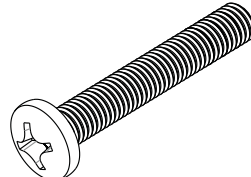
(4)M8x35 Screw



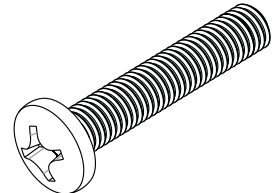
(4)M4x45 Screw



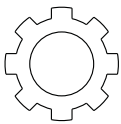
(4)M5x45 Screw



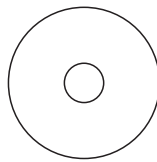
(4)M6x45 Screw



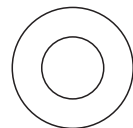
(4)M8x45 Screw



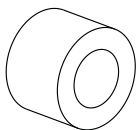
(4)M8 Lock Washer



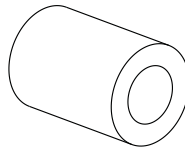
(8)M4/M5 Washer



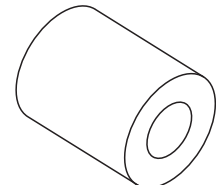
(8)M6/M8 Washer



(4)M6/M8x10mm Height Spacer



(4)M6/M8x20mm Height Spacer



(4)M6/M8x30mm Height Spacer



(8)6mm Stainless Steel Nut



(8)6mm Stainless Steel Washer



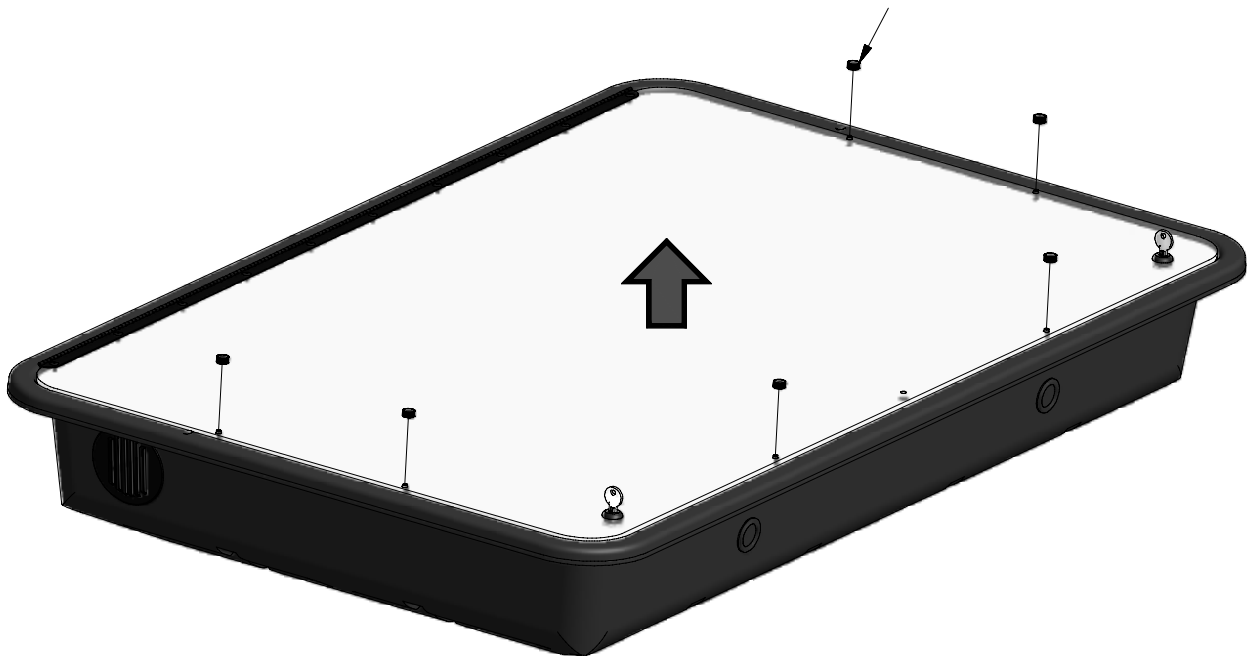
(4)6mm Bonded Washer

# STEP 1

**\*\*Read all of the assembly tips for each step thoroughly. The written tips may include important information that is not shown in the illustrations.**

1. Remove the knurled caps as shown in the image below.

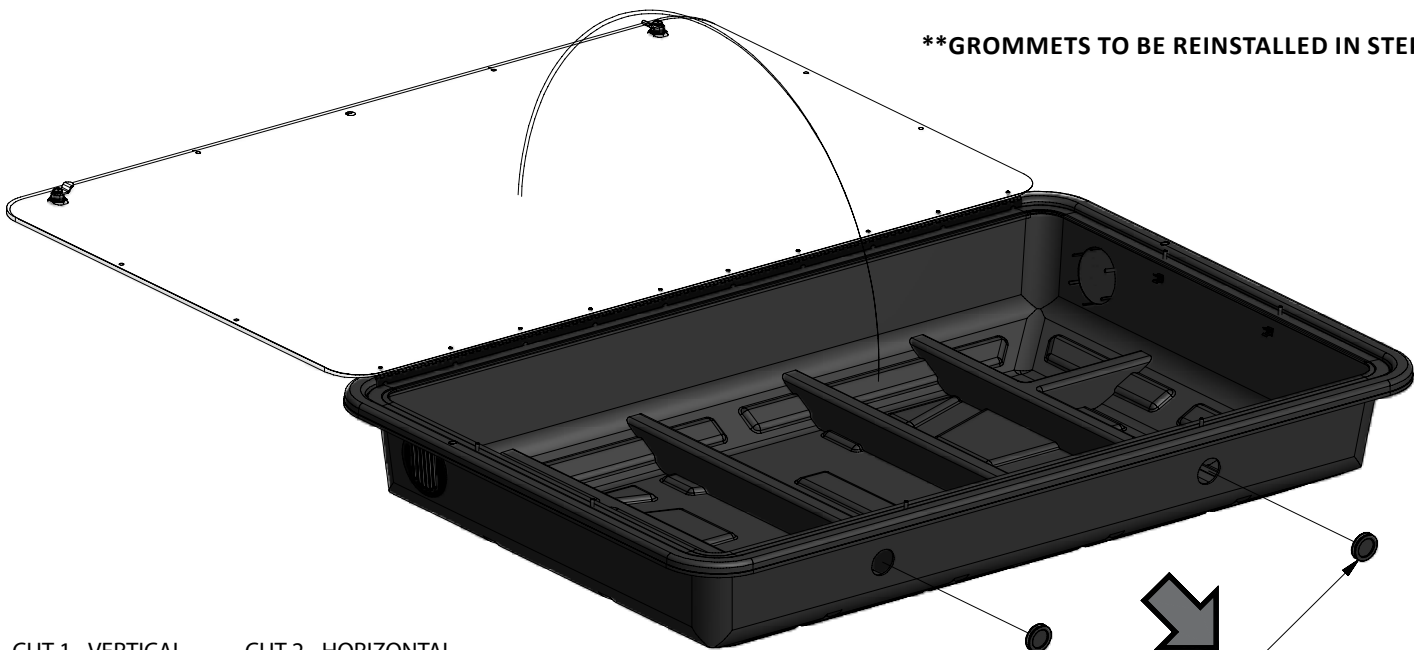
CAP - KNURLED - BLK .25X.50



# STEP 2

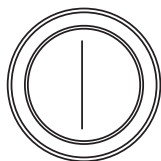
1. Remove the bottom grommets and make vertical and horizontal cuts as shown below.

**\*\*GROMMETS TO BE REINSTALLED IN STEP 7**



CUT 1 - VERTICAL

CUT 2 - HORIZONTAL

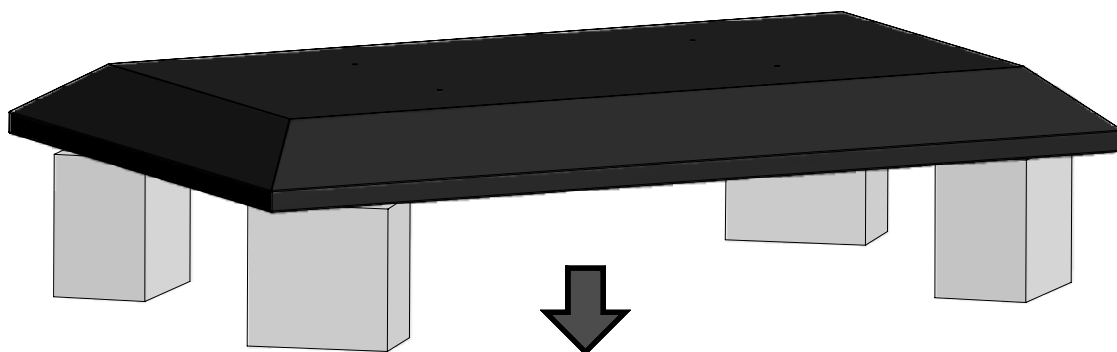


GROMMET - BOTTOM - LG  
(2 pieces)

NOTE: BE SURE TO CUT ALL THE WAY THROUGH.

## STEP 3

1. Arrange the foam blocks on the ground and then place the TV face down on them, as shown in the diagram.



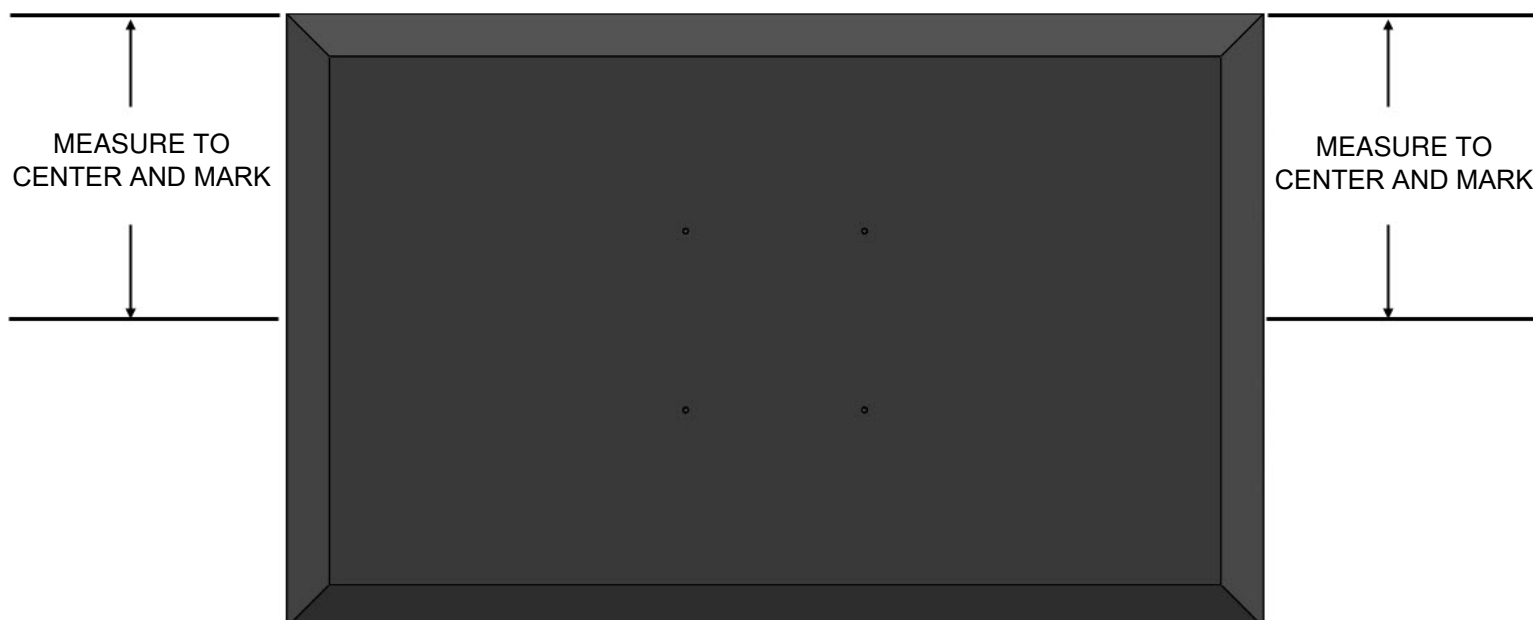
**\*\*POSITION FOAM BLOCKS UNDER THE OUTSIDE FRAME OF THE TV (NOT ON THE SCREEN).**

---

## STEP 4

1. Locate and mark the vertical center on the back-side of the TV.

**\*\*ACCURACY OF THE MEASUREMENTS IS HIGHLY IMPORTANT FOR PROPER ASSEMBLY OF THE UNIT.**

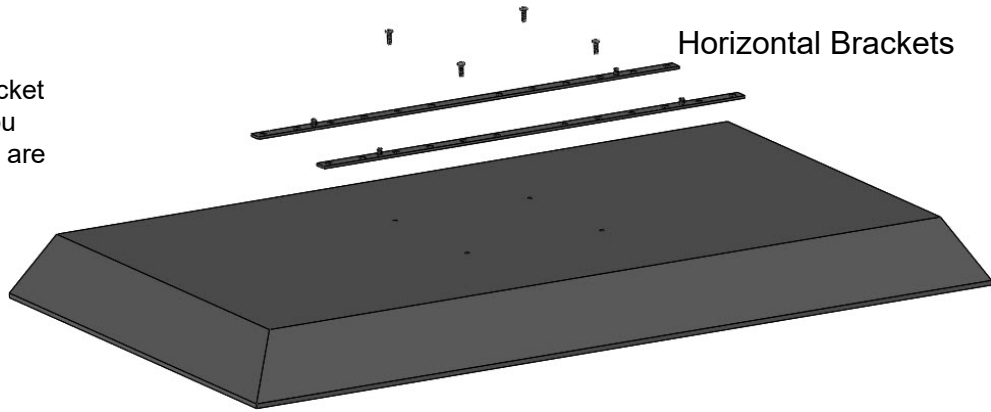




## STEP 5

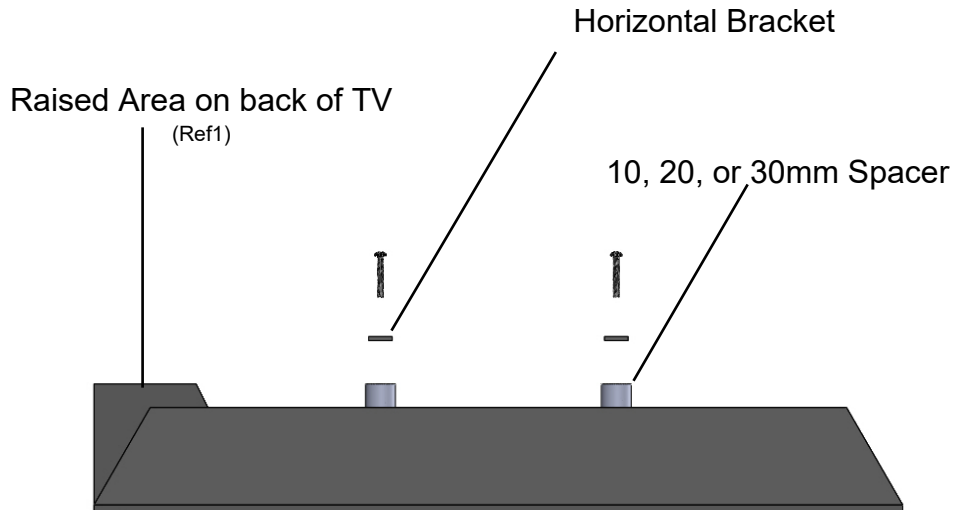
1. Place the horizontal brackets on the back of the TV. Make sure you are centering the bracket left to right on your mounting holes. I.E. if you are on the 3rd hole from right make sure you are on the 3rd hole from left.

**NOTE:** If your TV has a raised area on the mounting side (such as a speaker bar), you will install the 10, 20 or 30mm spacers under the horizontal bracket and use the longer screws to raise the horizontal bracket to the same plane as the raised area on your monitor. (See Ref1 to right)



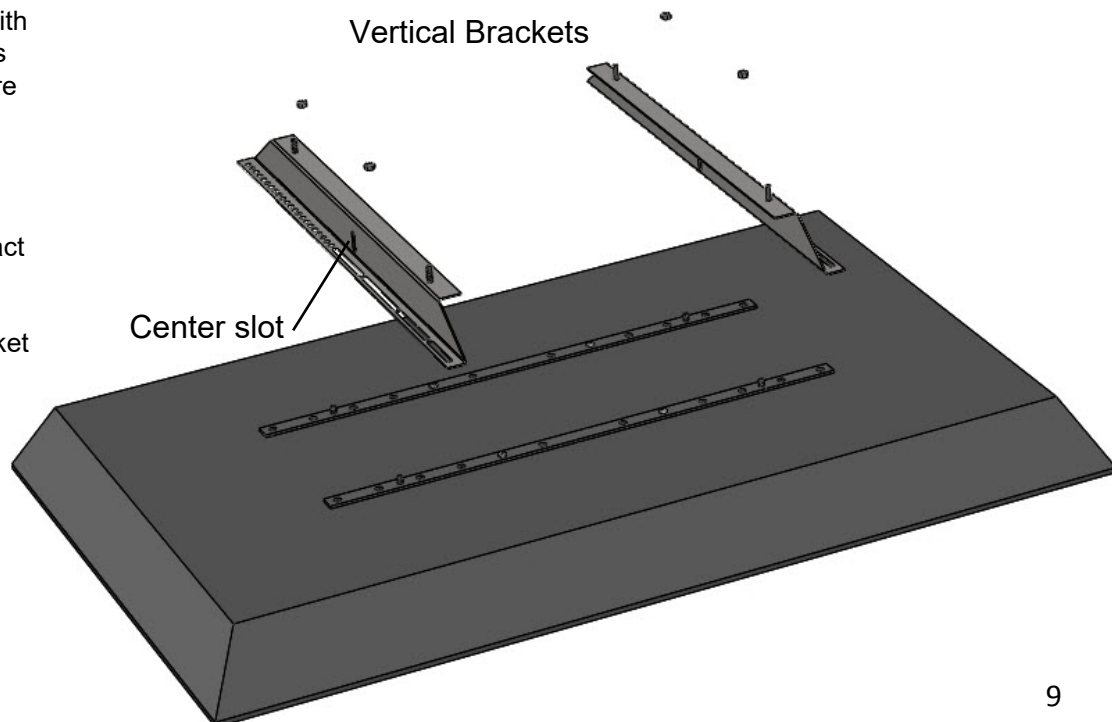
2. Install the provided screws that fit your TV using a Phillips head screwdriver. Use the provided washers if installing the 4mm or 5mm screws.

**NOTE:** you may also use the spacers to move your TV closer to the front panel if your display is thin. Be sure to check your TV depth and amount spaced to ensure it will still fit within our max interior depth.



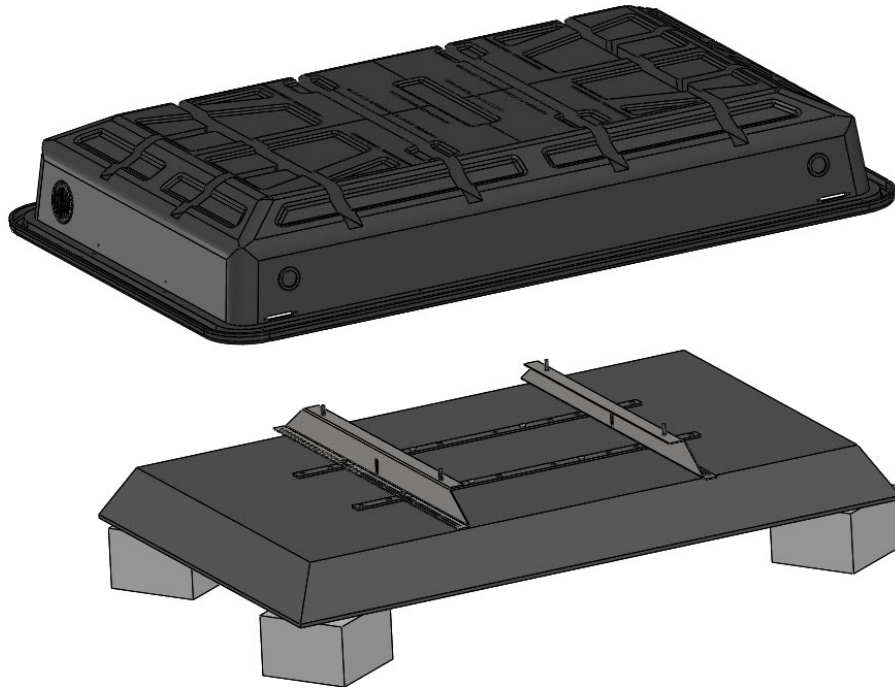
## STEP 6

1. Install the vertical brackets by aligning the center slot on bracket with the vertical center of your TV. This is the mark you made in step 4. Be sure the brackets are installed like the diagram with the threaded studs towards the middle of your monitor. You may need to slightly adjust the vertical bracket up or down from exact center which is OK. Place the 6mm washers and 6mm nuts on the threaded studs from horizontal bracket and tighten using a 10mm socket.



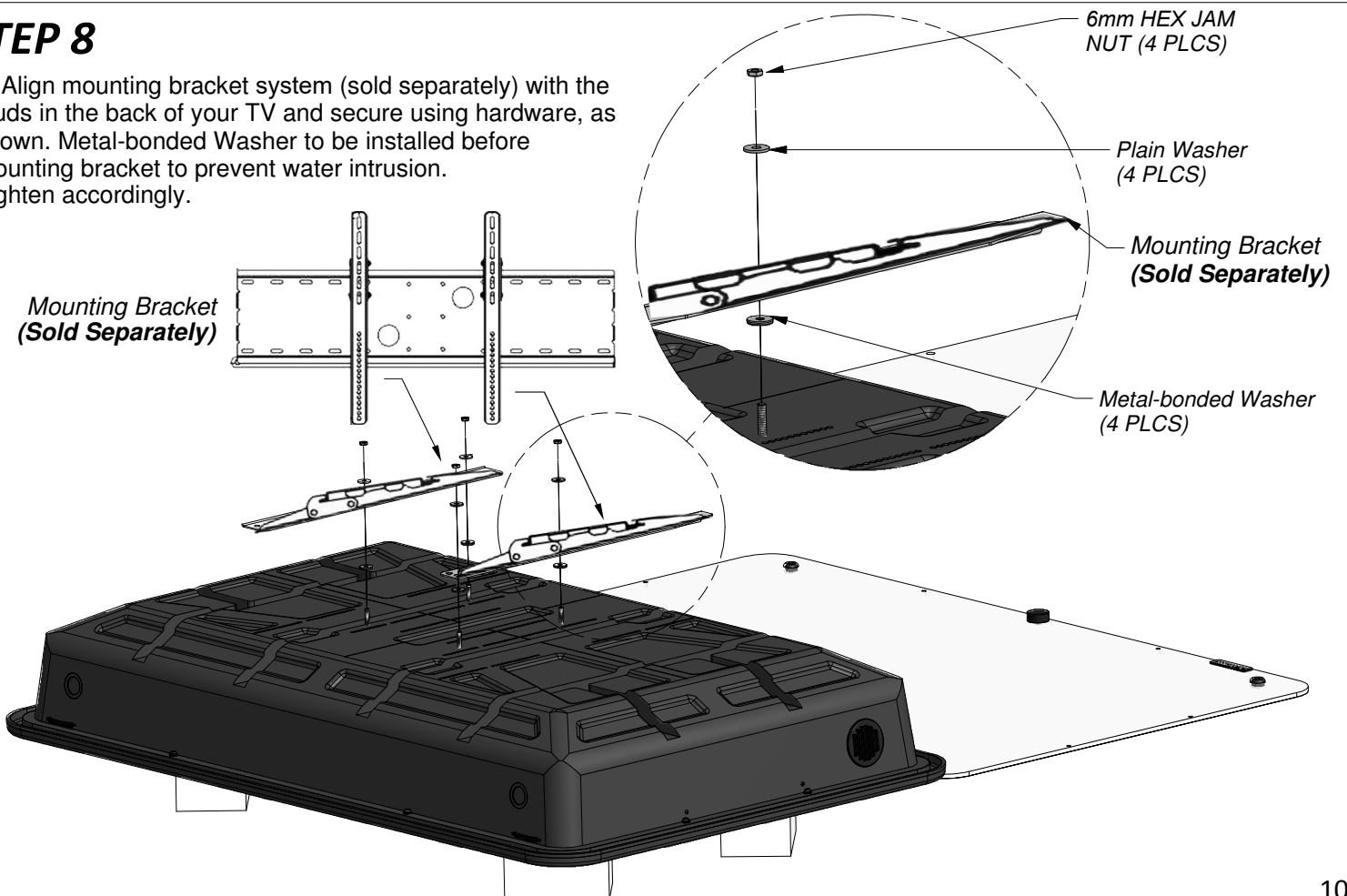
## STEP 7

1. Install power cord and any HDMI/Coax Cable/Component Cables needed, into correct "port(s)" on the television.
2. Place The TV Shield directly over the TV (and foam blocks) aligning the pre-drilled holes in The TV Shield with the threaded studs from the internal mount. In some cases you might need to use as small tool to align the threaded studs with the holes.
3. Pull all cords and wires through opening(s) where you removed the grommets and reinstall grommets around cords.



## STEP 8

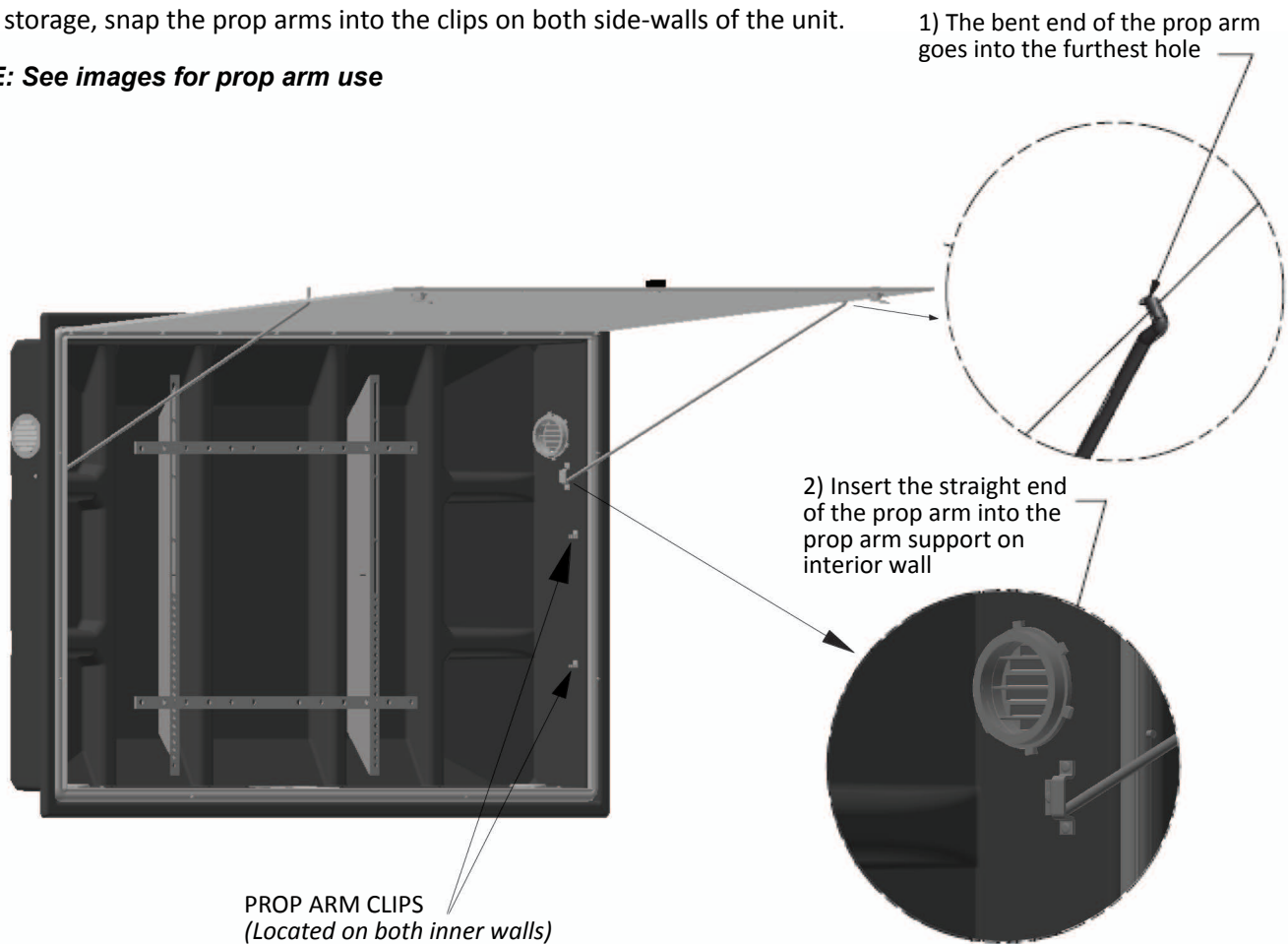
1. Align mounting bracket system (sold separately) with the studs in the back of your TV and secure using hardware, as shown. Metal-bonded Washer to be installed before mounting bracket to prevent water intrusion. Tighten accordingly.



## STEP 9

1. For storage, snap the prop arms into the clips on both side-walls of the unit.

**NOTE:** See images for prop arm use

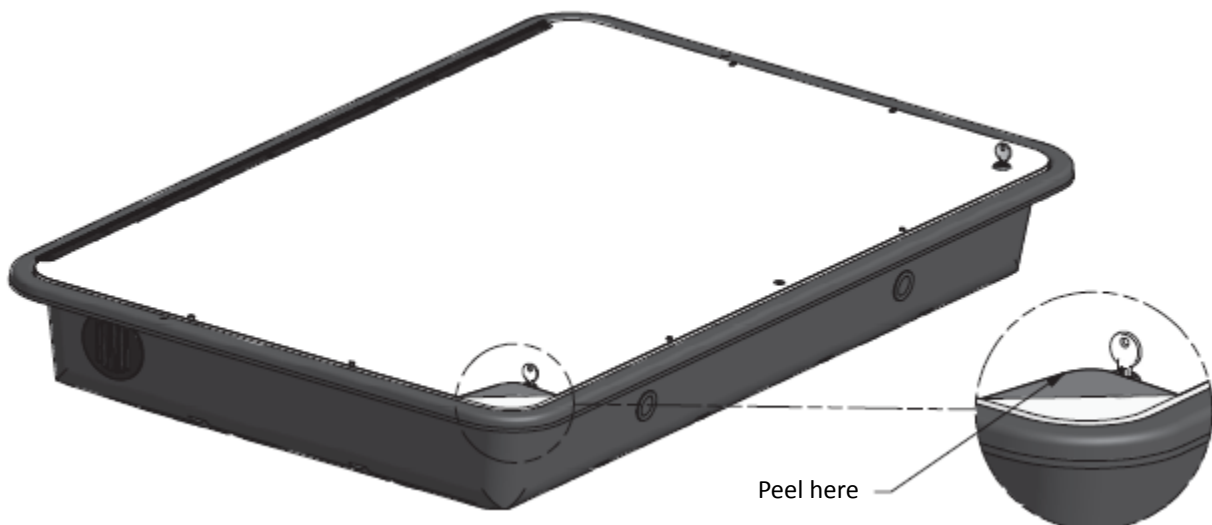


\*\*\*SEE THE CLEANING INSTRUCTIONS LOCATED WITHIN THIS MANUAL.\*\*\*

## STEP 10

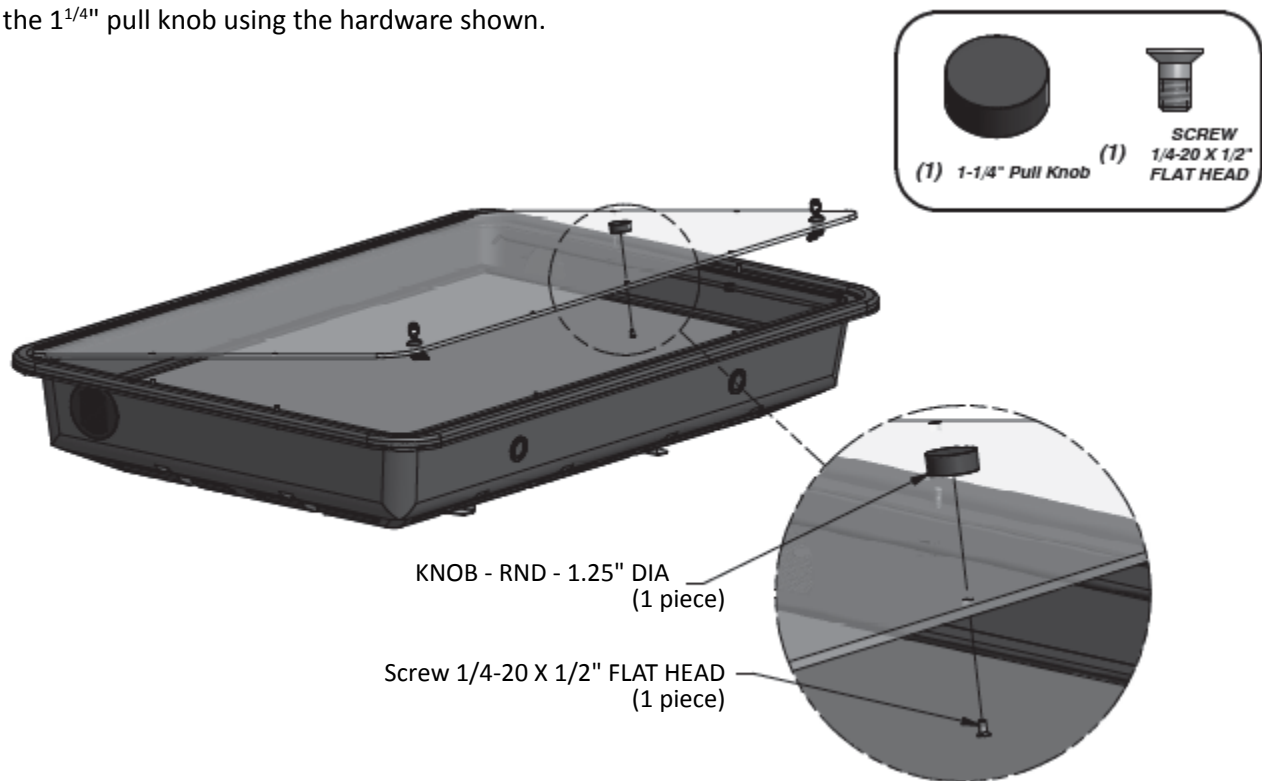
1. Peel and remove the protective paper from both sides of the polycarbonate cover.

**Note:** As a precaution, wash your hands and have a clean work area before you remove the protective covering. This will avoid any possible scratching of the lens that may occur during the wall mounting procedure. Also, it is advised to wipe clean the inside of the shield before securing.



## STEP 11

1. Attach the 1<sup>1/4"</sup> pull knob using the hardware shown.

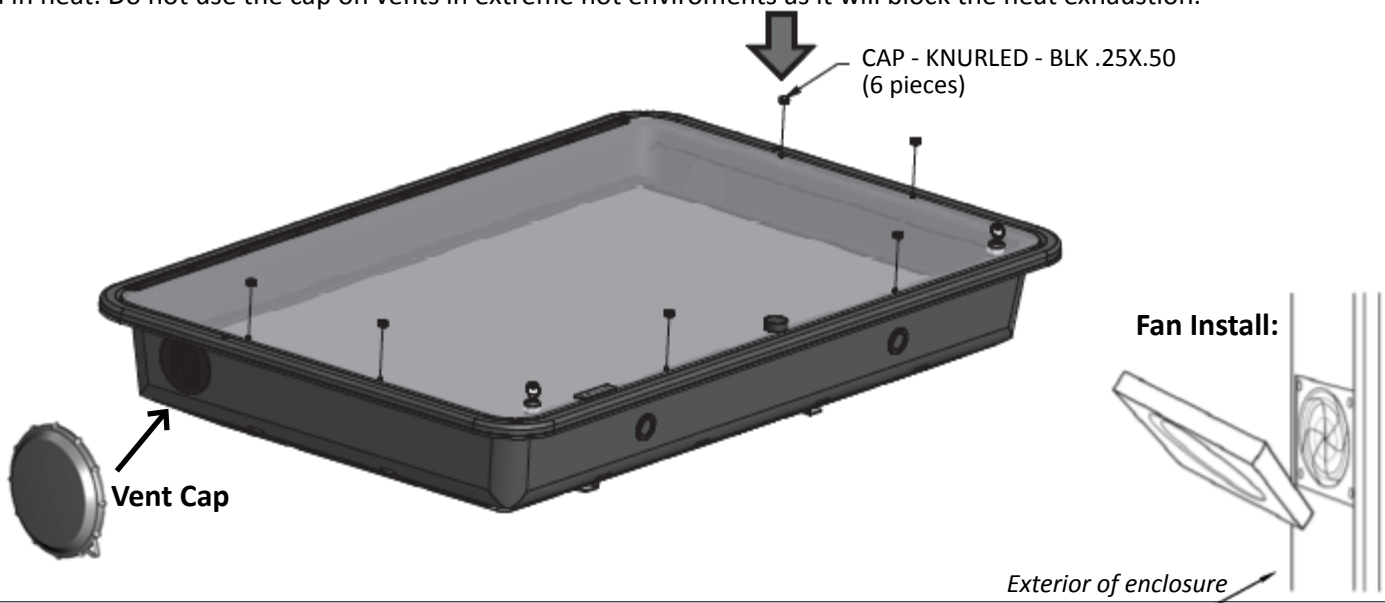


## STEP 12

1. Close the cover and replace the knurled caps, as shown.

2. If you purchased a unit with a fan system, please install the included fan filter. This filter protects the TV from bugs, dust and more. Place the foam filter inside of the filter cover and snap on the exterior of the fan located at the bottom of your enclosure.

3. Installation of vent caps is only recommended for situations like wash down and to cap the vents in cold environments to hold in heat. Do not use the cap on vents in extreme hot environments as it will block the heat exhaustion.



## STEP 13

1. Mount the TV, enclosed within The TV Shield® as one unit, according to the TV mount instructions provided with your mount (sold separately).

# CLEANING INSTRUCTIONS

## Polycarbonate:

When the polycarbonate sheet is first installed, the glazing compound and masking paper adhesive can be easily removed by applying naphtha (VM and P) or kerosene with a soft cloth, followed immediately with a thorough soap and water cleaning (DO NOT USE GASOLINE). Adherence to regular and proper cleaning procedures is recommended to preserve the appearance of the unit.

## Washing to Minimize Scratching:

Wash the polycarbonate sheet with a mild soap or detergent and lukewarm water, using a clean sponge or a soft cloth. Rinse the panel well with clean water. Dry the product thoroughly with a chamois or moist cellulose sponge to prevent water spots. Do not scrub, use brushes or apply abrasives on these products. Splashes, grease and smeared glazing compounds can be removed easily before drying by rubbing the shield lightly with a good grade of naphtha or isopropyl alcohol. Follow the alcohol rub with a mild detergent wash using warm water and end with a clean water rinsing.

## Minimize Hairline Scratches:

Scratches and minor abrasions can be minimized by using a mild automotive polish. Three such products that tend to polish and fill scratches are Johnson Paste Wax, Novus Plastic Polish #1 and #2, Novus, Inc., Minneapolis, MN and Mirror Glaze plastic polish (MG M10) Mirror Bright Polish Co., Pasadena, CA. It is suggested that a test be conducted on a sample of the polycarbonate sheet with the product selected and that the polish manufacturer's instructions be followed.

- DO NOT use abrasive or highly alkaline cleaners on the polycarbonate.
- DO NOT scrape the polycarbonate sheet with squeegees, razor blades or other sharp instruments.
- DO NOT ever use benzene, gasoline, acetone or carbon tetrachloride on the polycarbonate sheets.
- DO NOT clean the polycarbonate sheets in the hot sun or on very hot days.

## Compatible Cleaners for Polycarbonate Plastic:

The following cleaning agents have been found to be compatible with polycarbonate (the manufacturer's instructions should be followed):

- The TV Shield® recommended cleaners (found on our website at [www.thetvshield.com](http://www.thetvshield.com))
- VM and P grade Naphtha Joy™ (Proctor and Gamble)
- Palmolive Liquid™ (Colgate Palmolive)

## Cleaners for Graffiti Removal:

- Butyl Cellosolve (for removal of paints, marking pens, lipstick, etc.)
- Masking tape, adhesive tape or lint removal tools (work well for lifting off old weathered paints)
- Kerosene, naphtha, or petroleum spirits (generally effective for removing labels, stickers, etc)  
*Note: When the solvent will not penetrate the sticker material, apply heat (hair dryer) to soften the adhesive and promote removal (GASOLINE SHOULD NOT BE USED).*

## Job Site Precautions:

New construction and renovations frequently require that the glazing and surrounding sash and wall finish be cleaned of any excess mortar, paint, sealant, primers or other construction compounds. Only recommended cleaners should be used to clean the polycarbonate sheets. Contact with harsh solvents such as methyl ethyl ketone (MEK) or muriatic acid can result in surface degradation and possible crazing of the polycarbonate.

## BEST OUTDOOR MOUNTING PRACTICES

If you are mounting your unit in an outdoor environment, we have come up with some best practices to reduce the glare and to give you the best viewing of your TV or monitor.

- Purchasing an enclosure with anti-glare or installing our anti-glare front panel will reduce the glare to an extent, but does not eliminate it.
- Mount The TV Shield® in an area that does not get direct sun if possible.
- If mounting in direct sun or in an area that gets a lot of sun, it is best if you have some type of backdrop in front of The TV Shield®. E.g., if you can mount the enclosure where there is a wall in front of it, trees, bushes or any other darker objects, it will help with reflection.
- Use a tilting and swiveling mount as you may be able to angle the enclosure in different directions to reduce the amount of glare or reflection while watching.
- Depending on your TV's options, change the picture mode (in the settings menu) to dynamic and/or adjust the contrast, brightness, sharpness and color.



## **The TV Shield® Limited Product Warranty**

This limited warranty is provided by Protective Enclosures Company, LLC for The TV Shield® product(s) identified by the purchaser's registration as indicated below. This limited warranty is between Protective Enclosures Company, LLC and the registered purchaser of the product. There are no other warranties, express or implied, except as required by law, including warranties of merchantability and fitness for a particular purpose, that are provided for herein; however, all such implied warranties, if any, are limited to the duration of this specific limited product warranty. Some states do not allow limitations on how long an implied warranty lasts, so the above limitations may not apply to you.

### **The TV Shield® Limited Product Warranty:**

- \* 3-Year Limited Warranty on high molecular weight polyethylene plastic housing against cracking and breaking with normal consumer use.
- \* 2-Year Limited Warranty on the polycarbonate front shield (cover/panel/window) against cracking or breaking with normal consumer use. This warranty does not cover any scratches or damage caused by abuse or abnormal use; it only covers against discoloring, cracking, yellowing, or breaking of the polycarbonate front shield.
- \* 1-Year Limited Warranty on product failure or quality of workmanship and on all other components against any manufactures defects.

This is a limited warranty, subject to the conditions, limitations and exclusions identified herein. Protective Enclosures Company, LLC warrants to the original purchaser of the registered or identified product for a period of time listed above, from the date of purchase, that the product shall be free of defects in materials, and workmanship, and subject to the limitations set forth below; Protective Enclosures Company, LLC will repair or replace, at its option, any defective unit. Protective Enclosures Company, LLC hereby warrants to the original retail purchaser of this product that should this product or any part thereof, under normal use and conditions, prove to be defective in material or workmanship within one (1) year from the date of the original purchase, such defect(s) will be repaired or replaced with a new or reconditioned product (Protective Enclosures Company LLC's option) without charge for parts and repair labor. Purchaser must return the product to Protective Enclosures Company, LLC, (return receipt requested) or by other means that confirms delivery and Protective Enclosures Company, LLC shall make the said repairs or replacement within 60 days of receipt. In some instances the product may have been discontinued and cannot be replaced, or repaired. In that instance Protective Enclosures Company, LLC shall in its discretion attempt to replace the product with a substantially similar product in a current model or design or pay the purchaser a sum for the then fair market value of the product, considering the amount of depreciation since sale, and the use of the product. This Limited Warranty is the original retail purchaser's sole remedy for any and all such defect(s).

### **Conditions and Limitations:**

Proof of purchase is required (i.e. the sales receipt or other proof of payment). Damage caused by accidents, abuse, misuse or modification of the product will render this warranty null and void. This warranty is applicable only to the original purchaser and is not assignable or transferable. To obtain repairs or replacement under the terms of this warranty, please contact Protective Enclosures Company, LLC at 1-800-331-2628 or visit [www.protectiveenclosures.com](http://www.protectiveenclosures.com). You will need to provide proof of purchase (dated receipt showing where the item was purchased) and the product part number in order to receive warranty service. The purchaser is required to send the product back to Protective Enclosures Company or to a designated repair center and the purchaser is responsible for all charges for shipping and handling.



**This Limited Warranty does NOT cover:**

1. Products which have been subject to abuse, accident, alteration, modification, tampering, negligence, misuse, theft or attempted theft, vandalism, improper installation, lack of reasonable care, unauthorized repair or service, or if the model or serial number has been altered, tampered with, defaced or removed.
2. Loss or damage caused by the use of unauthorized cleaning products or methods that damage or destroy the product.
3. Initial installation or the removal and re-installation of the product.
4. Cosmetic damage, an act of God, or natural disaster.
5. Products modified or used for any purposes other than for those which the product is specifically designed.
6. Damage that occurs in shipment (the third party shipping service is responsible for any shipping damages).

**The company reserves the right to remedy any minor defects in defective units by replacing defective, inoperable or missing parts rather than offering a refund or exchange.**

Protective Enclosures Company, LLC, or any subsidiaries, shall not be liable, under any circumstances, for incidental, indirect, special, and consequential or multiple damages as a result of the sale or use of this The TV Shield® product. Some states and countries do not allow the exclusion or limitation of incidental or consequential damages, so the above limitations or exclusions may not apply to you.

THE EXTENT OF PROTECTIVE ENCLOSURES COMPANY, LLC'S LIABILITY UNDER THIS WARRANTY IS LIMITED AS PROVIDED ABOVE AND, IN NO EVENT, SHALL THE LIABILITY OF PROTECTIVE ENCLOSURES COMPANY, LLC EXCEED THE PURCHASE PRICE PAID BY THE ORIGINAL RETAIL PURCHASER FOR THE PRODUCT.

**Any questions regarding this warranty should be addressed to:**

Protective Enclosures Company, LLC  
The TV Shield | The Display Shield  
ATTN: WARRANTY DEPARTMENT  
277 Douglas Avenue, Suite 1012  
Altamonte Springs, Fl. 32714  
USA  
800-331-2628 Toll Free

THIS WARRANTY IS IN LIEU OF ALL OTHER EXPRESS WARRANTIES OR LIABILITIES. ANY IMPLIED WARRANTIES, INCLUDING ANY IMPLIED WARRANTY OF MERCHANTABILITY, SHALL BE LIMITED TO THE DURATION OF THIS WRITTEN WARRANTY. IN NO EVENT SHALL PROTECTIVE ENCLOSURES COMPANY, LLC, OR ANY SUBSIDIARY, OWNER, OR PARTNER BE LIABLE FOR ANY CONSEQUENTIAL OR INCIDENTAL DAMAGES FOR BREACH OF THIS OR ANY OTHER WARRANTY EXPRESS OR IMPLIED WHATSOEVER.

No person or representative is authorized to assume for Protective Enclosures Company, LLC any liability other than expressed herein in connection with the sale of this product. Some jurisdictions do not allow limitations on how long an implied warranty lasts or the exclusion or limitation of incidental or consequential damages so the above limitations or exclusions may not apply to you. This warranty gives you specific legal rights and you may also have other rights, which vary from jurisdiction to jurisdiction.



## **REFUND/RETURN POLICY**

We offer a **30-Day Money Back Guarantee** on all unopened, unused and/or undamaged units. The unit must be unaltered and it must have the protective covering(s) on the front panel and be undamaged and in original new condition. A 10% restocking fee applies and all refunds will be minus the actual shipping charges to and from Protective Enclosures Company.

**Upon acceptance and processing of the return/refund, all funds will be returned to the original method of payment (minus all fees).**

After 30 days, and up to 90 days from the date of the purchase, if you are not happy with The TV Shield® enclosure, and have opened it, you can return it for a refund, less actual shipping charges to and from Protective Enclosures Company. The unit(s) must have protective covering(s) on the front panel and be undamaged and in original new condition. Due to the nature, size and logistics in inventory management and distribution, our restocking fee after 30 days, and up to 90 days, is 25% and applies to all opened / new non defective The TV Shield® enclosures.

**All refunds will be returned to the original method of payment minus all fees and will be processed on our end within 10 business days (excluding weekends and holidays).**

Protective Enclosures Company DOES NOT accept returns on units that have been drilled, scratched, damaged, abused or have had the protective coverings taken off of the front panel, as they cannot be resold as new products. If you have made a mistake when drilling or mounting The TV Shield®, although we will not accept a return within terms, we do have several remedies available to you to help you repair the “damaged” area and still be able to use your unit. Please call our customer service department for help at 1-800-331-2628 which is toll free, anytime during normal business hours which are between 9:30am and 6:00pm Eastern Standard Time, Monday through Friday.

### **LIMITED WARRANTY**

**Protective Enclosures Company, LLC – The TV Shield® Limited Warranty – Valid in the United States and Canada**

#### **Protective Enclosures Company, LLC**

The TV Shield | The Display Shield  
277 Douglas Avenue, Suite 1012  
Altamonte Springs, Fl. 32714  
800-331-2628 Toll Free

Specifications are subject to change without notice.  
All trademarks are the property of their respective owners.  
[www.protectiveenclosures.com](http://www.protectiveenclosures.com)



**Protective Enclosures Company**  
277 Douglas Avenue, Suite 1012  
Altamonte Springs, Fl. 32714  
1-800-331-2628

Specifications are subject to change without notice.  
All trademarks are the property of their respective  
owners.

**[www.thetvshield.com](http://www.thetvshield.com)**

# Accessories

## Accessories for PEC's Outdoor TV & Display Enclosures



For Hot or Cold Environments with Moisture, Dust & More...

### CLIMATE CONTROL

#### Anti-Glare Front Shield



Reduces Sun Glare  
& Improves Clarity

Models:	Models:
TVS1929FSAG	DS1929FSAG
TVS3032FSAG	DS3032FSAG
TVS3643FSAG	DS3643FSAG
TVS4450FSAG	DS4450FSAG
TVS5255FSAG	DS5255FSAG
TVS6065FSAG	DS6065FSAG

Sun rays create a significant glare challenge for outdoor TV solutions. This means that light reflecting off of a TV or display can easily hinder viewing clarity. PEC has developed an innovative anti-glare coating process for shatter-resistant polycarbonate front panels which eliminates 90% of glare. PEC's scratch resistant anti-glare Shields enable much higher quality viewing for TVs and digital monitors placed in direct sun environments.

#### Dust Cover



*Add a Layer of  
Protection from  
Dust, Insects or to  
Simply Discourage  
Tampering*

This quick install cover is ideal for those times when you are not going to use your TV or The TV Shield.

1. Material: waterproof/dustproof premium fabric
2. Elastic fit for quick installation and removal
3. Custom designed to fit your PEC enclosure

#### Heater



This fan forced heater keeps the interior temperature of a unit between 41° F and 47° F (above freezing). It has an in-line thermostat and requires at least 1 1/2" of space between the bottom of the TV and the enclosure in order to be installed.

#### Moisture Control Gel Case



This Dehumidifying Silica Gel Case absorbs dampness inside the case and protects anything that can be damaged from rust, mildew, and fungus (the case size is 4" x 2" x 1/2").

Visit [www.thetvshield.com](http://www.thetvshield.com) for Full Product Descriptions and to Order  
or Call 1-800-331-2628

## CLEANERS & PROTECTANTS

### Shield Cleaner / Polish / Cleaning Pad Combo Kit



#### Kit Includes:

1. One 8 oz. bottle of PEC Novus #1 cleaner
2. One 8 oz. bottle of PEC Novus #2 polish
3. One cleaning pad

This kit includes PEC's top recommended products for keeping enclosures clean and looking like new.

The Novus #1 cleaner gently cleans all plastics without scratching and leaves a lustrous shine that resists fogging, repels dust, and eliminates static. The cleaner also helps prevent finger marks, contains no abrasives or harsh chemicals and leaves a smooth, clean, greaseless shine.

The Novus #2 polish removes scratches, haziness, and abrasions from most plastics. Use the cleaner repeatedly to restore faded and discolored plastics. The product removes the damage instead of filling it in and buffs out quickly. After restoring, this solution seals with a coat of polish.

*\* Never clean polycarbonate with paper towels because they can scratch the shield!*

### Polycarbonate Shield Cleaner #1 (8oz Spray)



#### Features:

1. Improves finger smear resistance
2. Contains no abrasives or harsh chemicals
3. Leaves a smooth, clean, greaseless shine

This solution gently cleans all plastics without scratching and leaves a lustrous shine that resists fogging, repels dust, and eliminates static.

### Polycarbonate Shield Polish #2 (8oz Bottle)



#### Features:

1. Removes damage instead of filling it in
2. Buffs out quickly
3. After restoring, this treatment seals with a coat of polish

This polish removes scratches, haziness, and abrasions from most plastics. Use the solution repeatedly to restore faded and discolored plastics. A 2oz bottle is also available.

## OUTDOOR AUDIO

### Outdoor Audio Speaker Kit



#### Kit Includes:

1. Pair of 4" dual 3-way black 50Watt RMS/100watt max dynamic indoor & outdoor speakers
2. 20WX2 mini amplifier w/ A/C power adapter
3. RCA cable
4. 20ft high quality speaker cable
5. Self-adhesive Velcro®

This solution will provide better audio than a TV could provide and it far surpasses the sound you would have gotten, giving you the ability to have music or dynamic movie watching experiences outside. Some TVs need a converter for this kit.

### 4" Outdoor Dual 3-Way Speakers



#### Features:

1. Pair of dual black multipurpose indoor/outdoor speakers
2. 50 watts of RMS power, with 100 watts of peak power
3. 4" woofer, 25mm poly cone midrange, & 20mm piezo dome tweeter
4. Wall-mountable, UV-treated ABS enclosure; mounting brackets included
5. Each speaker measures: 8.25" x 5.25" x 5.25" (H x W x D)

These are great sounding 3-way speakers that work indoors or outdoors with 100 watt peak power handling (they can mount to the unit directly or they can mount to the wall).

### Premium Digital to Analog Audio Converter



#### Features:

1. Converts Coaxial or Toslink signals to analog L/R audio
2. Toggle switch is used to choose Coaxial or Toslink as the input
3. Supports DTS/Dolby Digital audio source
4. Built-in Dolby/DB HD, the DTS HD, LPCM/LPCM with decoding
5. 24-bit S/PDIF incoming bit stream on left & right channels
6. Supports a full range of 32k, 44k, 1k, 48k, 64k, 88.2k, 96k, 192k
7. Power Supply: 5V DC

Some TVs need this item for the audio kit system to work. TVs that don't have RCA or 3.5mm headphone outputs need this Dolby Digital approved, UL listed converter.

### Mini Stereo Amplifier (Analog Inputs)



#### Features:

1. 2 channel
2. 3.5 input for iPod or any other MP3/MP4 device
3. Separate bass & treble controls
4. Aluminum alloy case
5. Input power: DC 9- 14.4v 2A
6. Input impedance: 47k
7. Frequency response: 20Hz-20 kHz
8. Speaker impedance 2-8ohm
9. Harmonic distortion: <0.4%
10. SNR >80db
11. Size: 6.02" x 3.74" x 1.5"
12. Two 10ft high speaker cables

This Amp allows you to listen to music easily and includes power supply, volume control, a pair of RCA cables and an RCA Input to plug into your TV.

**Call 1-800-331-2628 or Visit [www.thetvshield.com](http://www.thetvshield.com) to Order**

Copyright © 2009-2019 Protective Enclosures Company, LLC | Made in the USA  
The TV Shield®, The Display Shield® and The TV Shield Pro® and their logos are trademarks of Protective Enclosures Company